

LoCa® Guangzhou LongChuang Electronic Technology Co., Ltd

Add: 5th, 3rd Building, ShengBang Industrial Park, Dong Xiang Cun, Dashi Town, PanYu, GuangZhou

电话(Tel): 0086-020-34890057 Email:sales04@gzclcd.com Contact:Lillian Xu(+86 18675956820)

Web: www.gzclcd.com

Constant Voltage Ultrathin light box Power Supply LB-18W



Features:

- 1.Constant Voltage design
- 2.100-240VAC input
- 3.Withstand 300VAC surge input for 5seconds
- 4.Protections:Short circuit/Over load/Over current
- 5.Cooling by Convection or Forced air
- 6.100% full load burn-in test
- 7.High Reliability



| SPECIFICATION | | LB-18W12V1.5A | LB-18W24V0.75A |
|---------------|----------------------|---|----------------|
| OUTPUT | Rated DC voltage | 12V | 24V |
| | Rated current | 1.5A | 0.75A |
| | Current range | 0-1.5A | 0-0.75A |
| | Rated Power | 18W | |
| | Voltage tolerance | 12±0.5V | 24±0.5V |
| | Ripple & Noise | ≤120mVP-P | ≤240mVP-P |
| | Load regulation | ±2% | |
| | Setup,Rise time | 50ms/230VAC | |
| | Hold up time | 20ms/230VAC | |
| INPUT | Voltage range | 100-240VAC | |
| | Frequency range | 47-63HZ | |
| | Efficiency(Tpy.) | >83% | >85% |
| | Leakage current | 0.25mA/230VAC | |
| PROTECTION | Over Current | 110%-150% | |
| | Reset After Shutdown | Protection type: Hiccup mode at after the fault has been removed | |
| ENVIRONMENT | Working TEMP. | -25°C-40°C | |
| | Storage TEMP. | -40°C-80°C | |
| | Working Humidity | From 10%to90% relative humidity (non-condensing) | |
| | Vibration | 10-500HZ,2G 10min/1cycle,preiod for 60min,each along X,Y,Z axes | |
| | TEMP. coefficient | ±0.03%/°C (0-50°C) | |
| SAFETY&EMC | Safety Standards | Design refer to LVD EN61347-2-13:2006,EN61347-1:2008 | |
| | With stand Voltage | I/P-O/P:3KVAC,I/P-COVER:3KVAC,O/P-COVER:500VAC | |
| | Isolation Resistance | I/P-O/P:>100M Ohms/500VDC/25°C/70% RH | |
| | EMC | EN55015:2006/A2:2009,EN61000-3-2:2006/A2:2009,EN61000-3-3:2008,EN61547:2009 | |
| OTHERS | MTBF | 50KHours (25°C) | |
| | Dimension | 172*18*18mm(L*W*h) | |
| | Weight | 43g | |

Configuration dimensions(Unit:mm)



Circuit diagram:

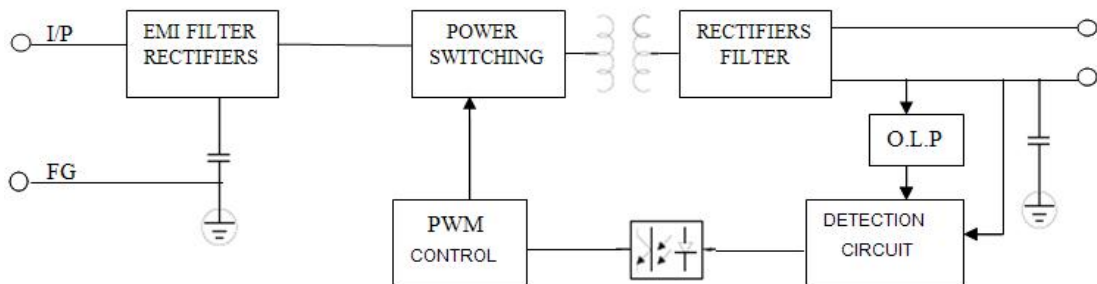


Diagram:

